

HVAC COMMERCIAL SERVICES



AIR-TRO INC

DESIGN • INSTALLATION • SHEET METAL • MAINTENANCE

Air-Tro Services

Air-Tro is a full-service heating, ventilation and air conditioning (HVAC) contractor

With a licensed, professional mechanical engineer on staff, Air-Tro can perform design-build mechanical project work.

Our portfolio of projects includes:

- clean rooms
- refrigerant flow systems
- high-static air handlers
- water source heat pumps
- cold and hot storage spaces
- large-scale ventilation projects that incorporate ultraviolet sterilization technology for pharmaceutical production applications

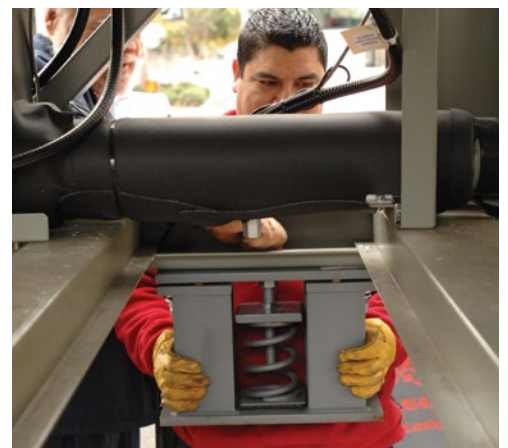
We have a large staff of service technicians on-call for demand repairs, and we have several installation crews, so emergency equipment replacement can be scheduled quickly, minimizing down time. Plus, our commercial scheduled maintenance program handles the challenge of tracking your equipment condition and servicing.



612 Association Medical Offices

An outdated central chiller and boiler plant had become worn out and required replacement. The equipment's rooftop location and the building's placement on a major city street required careful planning and meticulous installation of the replacement equipment. Plus, the need to keep downtime to a minimum for the health and comfort of patients meant much of the work needed to be done during off-hours and on holidays.

In the pre-dawn hours, Air-Tro craned the old equipment down and quickly installed the base, fittings and new equipment itself, quickly restoring heating and cooling to the building. The 120-ton chiller and 5-million BTU boiler were up and running before the morning was over.

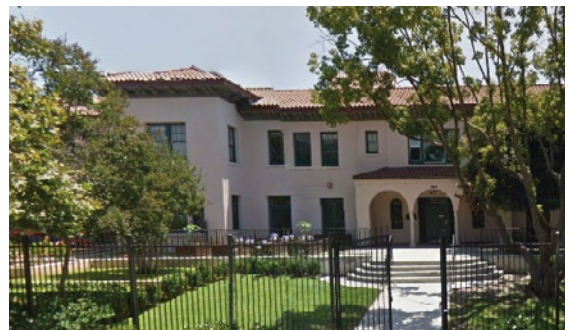


L.A. Leadership Academy

When Los Angeles Leadership Academy chose to purchase and rehabilitate a 30,000 square foot, somewhat-neglected building complex for its new charter school location, it turned to Air-Tro to bring the building's heating and air conditioning systems up to the 21st century. Budget constraints forced the project to span five years and to include a mix of private contracting and state-funded prevailing wage work, but over the course of the project, Air-Tro replaced the chiller plant, the boiler, many of the air handlers, and nearly all of the ductwork.

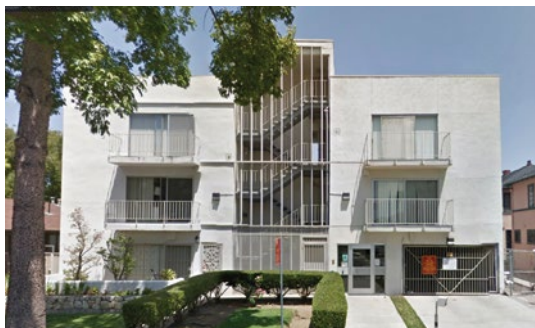


Due to the phased nature of the project, much of the work took place while students were on campus, so Air-Tro took all necessary safety precautions to protect the well-being of the children while ensuring that all work was done to the high standards expected for schools and meeting the schedule of the Academy.



USC Regency Hall

The University of Southern California wanted outstanding performance and top energy efficiencies for the to-be-renovated Regency Residency Hall, so Air-Tro installed a complete Mitsubishi Electric CITY MULTI® Variable Refrigerant Flow system, including 12 air handlers and matched Mitsubishi condensers. The project involved over 1,200 feet of copper refrigerant lines, digital controls to monitor and vary refrigerant flow, and the demolition and removal of the existing heating and air conditioning system, all of which had to be done on a tight schedule so that work would be complete and occupancy certificates issued before classes resumed and students returned.



Since this was a general renovation project (and not just for heating and air conditioning), it required coordinating work with a dozen other skilled trades at work on the project, and contingencies and change orders had to be dealt with promptly to keep the project on schedule. The renovation was completed on time and on budget, giving USC students modern, comfortable living quarters for the 2012-2013 academic year.

Occidental College Mullin Art Gallery

Providing climate control to a 10,000 square foot art gallery presented unique engineering and aesthetic challenges. For instance, protecting the art from dampness and climate extremes could not be done in a way that interfered with the art experience of the gallery patrons.

For this challenge, we used a Mitsubishi Electric CITY MULTI® Variable Refrigerant Flow system that used both duct-free and ducted air handlers. This kept the equipment as unobtrusive as possible. The installation included six air handlers mated to three condensing units, and although work had to be coordinated with several other construction trades on a tight schedule, it was completed smoothly and on time.



Cameron Measurement Systems



When it was decided that productivity for this manufacturing plant would be improved by controlling the interior climate, Air-Tro was hired for its design-build skills. We provided engineering and construction management, HVAC contracting, and retained the insulation, electrical, concrete, and gas fuel line contractors, all while coordinating all of their efforts.

The result was 140 tons of cooling installed and running within three months of project start. All work was done while the plant remained open and in production, which minimized the inconvenience to Cameron personnel.



BioAgri Pharmaceuticals

This large bioengineering plant required enormous amounts of ventilation, but the incoming air needed to be sterilized to prevent exposing poultry to Newcastle virus and avian/bird flu. And the 20,000 birds required 60,000 cubic feet per minute of outside air, which presented a significant engineering challenge.

Air-Tro mastered the challenge with the installation of over 400 feet of spiral ductwork, some of which measured up to 6 feet in diameter. To prevent the infiltration of bacteria and viruses, we installed banks of ultraviolet lights, using over 60 lamps to ensure proper sterilization of the ventilation air. The project required the design and fabrication of a 30-foot-high structural steel scaffolding to support the ductwork, extensive roofing work for duct penetrations and patching, and electrical connections to the banks of sterilization lamps.



When service is needed, Air-Tro Maintenance accounts take priority, and they receive the best commercial rates on equipment replacement.



Commercial Maintenance

Heating, Ventilating and Air Conditioning (HVAC) equipment operates for thousands of hours every year, more than most automobiles.

Most car owners protect their cars by keeping them maintained and serviced, and HVAC equipment benefits from the same kind of regular care by trained technicians.

Good maintenance means:

- higher efficiencies
- better comfort
- fewer breakdowns
- longer equipment life

HVAC units can cost thousands (or tens of thousands) of dollars to replace. Protect your investment by providing your systems with the care they require.

Air-Tro maintenance customers can rest assured because we take great pride in providing top-notch service.

When service is needed, our maintenance accounts take priority, and they receive the best commercial rates on equipment replacement.

PEACE OF MIND

Regular maintenance also delivers peace of mind to building owners and managers. Responsible building management keeps tenants and employees healthy and satisfied, and maintenance logs can be useful if it becomes necessary to show due diligence in proper concern for building occupants.

About Air-Tro

"Bob & Tony of Air-Tro are beyond description. Their family has been keeping my family (dating back beginning with my parents 40+ years ago) cool in the summer and warm in the winter. Whatever your HVAC needs, these guys should be your first and only call!" — Bradford Creger

Air-Tro knows that what our customers need is work performed by highly-skilled service professionals, delivered in a friendly and reliable fashion. All of Air-Tro's technicians are EPA certified, and many go on to become North American Technician Excellence (NATE) certified too, gaining increasing levels of technical knowledge as they advance through the NATE program.

Strong technical performance has earned Air-Tro such honors as EPA Energy Partner, Air Conditioning Contractors of America (ACCA) Commercial Contractor of the Year, and leadership in the Institute of Heating and Air Conditioning Industries (IHACI).



What our customers tell us again and again is how much they appreciate the good nature and cheerfulness of our field staff. Air-Tro has been named a Reader's Choice favorite by subscribers of the Los Angeles Times, the Pasadena Star-News and the San Gabriel Valley Tribune.



What Our Customers are Saying

Air-Tro has significantly cut our energy costs

"Having a comprehensive planned maintenance program in place has many advantages. Planned maintenance with Air-Tro has significantly cut our energy costs. Besides reducing energy usage, Air-Tro's maintenance program has extended the life of our many heating and cooling systems and cut down on "breakdown" repairs."

Steve, Alhambra, Manufacturing

Fast response, and a job done right the first time

"Air-Tro's service is second to none. They take our customer satisfaction seriously, and mean business when it comes to our account. They prioritize repairs versus preventative measures. They take into consideration our lease agreements. They use

computerized dispatch and tasking to ensure a fast response, and a job that is done right the first time, by an expert!"

Cecilia, Dallas, National Retail Chain

Solid assurance your facility will be maintained the right way

"If you are just beginning your partnership with Air-Tro, you will immediately notice the attention to detail. They leave no stone unturned when it comes to your equipment, and are relentless when it comes to making sure your A/C units are functioning perfectly. And why not? Other service companies have had a "get in and get out" approach. Air-Tro provides you with solid assurance that your facility will be maintained the right way. This peace of mind and expertise is why we have used Air-Tro for over twenty years."

Joe, Pasadena, School Facility Director



For more information, visit our commercial section on the web at airtro.com/commercial



Follow us:

facebook.com/airtro



twitter.com/airtroinc





AIR-TRO, INC.
HEATING, VENTILATION & AIR CONDITIONING
1630 S. MYRTLE AVE. MONROVIA, CA 91016
626.357.3535 | airtro.com